

VOLUME HANDLER® 2

SALES GUIDE



INTRODUCTION

Drain-All No-loss condensate traps provide unique, high quality, energy efficient, reliable product solutions for draining and moving liquids such as: (1) condensate removal from compressed air systems, (2) oils and lubricants from manufacturing or test equipment, and (3) liquids from atmospheric and vacuum systems. Drain-All condensate traps are produced under a certified ISO 9001 Quality Management System to ensure the product exceeds customer expectations.

Drain-All products are industrially robust, require little maintenance and since they do not require any electrical connections, can be easily installed on equipment at any point in a system. The unique design maintains a liquid barrier inside the trap which prevents the escape of costly process gas. As a result, no-loss condensate traps provide energy savings when compared to timer drains and manual valves. These patented devices are backed by an excellent warranty and a strong technical support staff who are available to assist customers in developing engineered solutions for all of their liquid drainage problems.

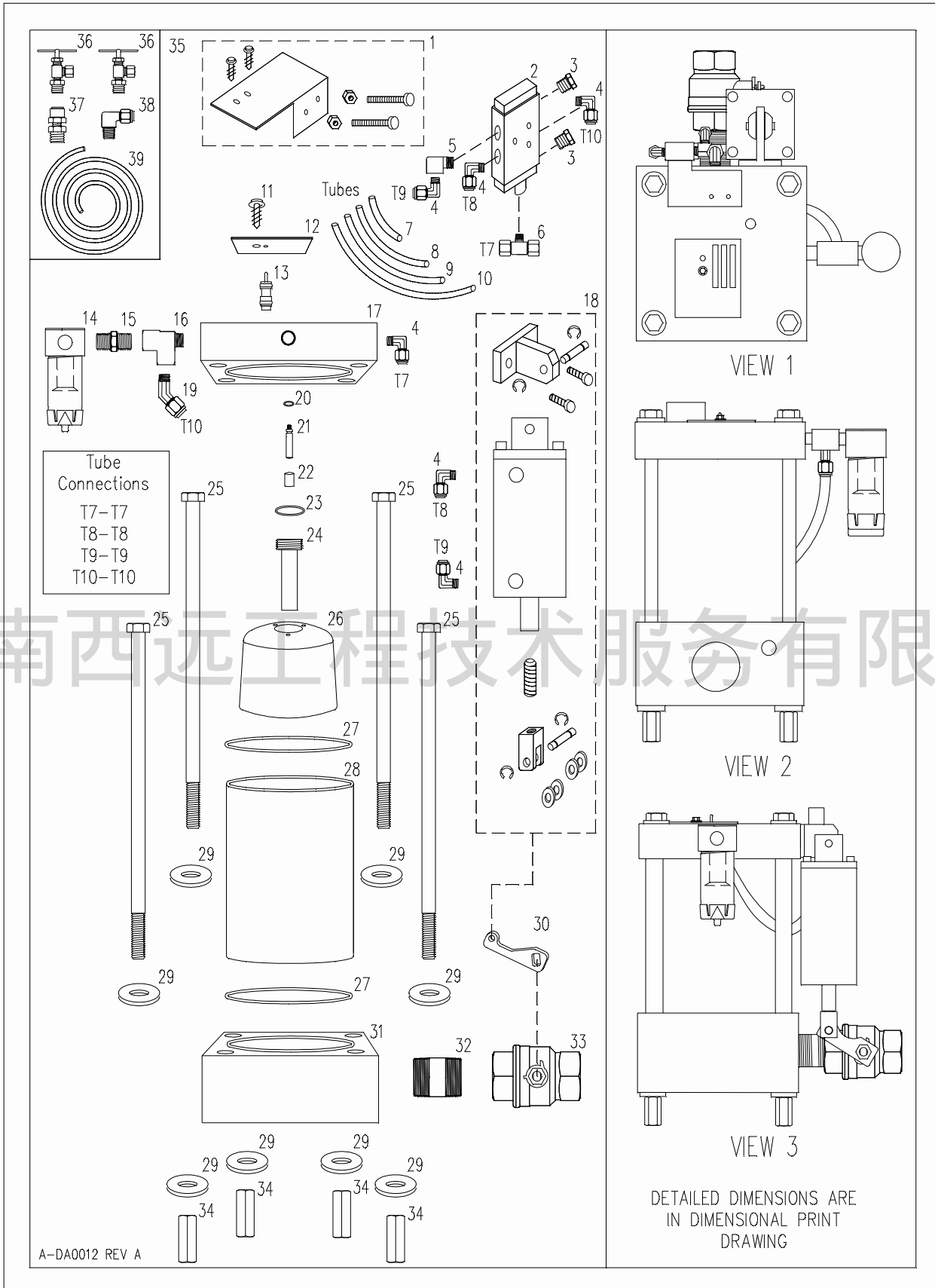
The Drain-All product line includes a wide array of products, options and accessories which enable customers to customize their particular liquid drainage systems. The Drain-All condensate drains are compatible with all manufactures of compressors, aftercoolers, filters/separators, receivers and dryers.

SPECIFICATIONS	
Part Number	VH20-0LA4A
Max Liquid Temp - °F (°C)	170 (76.7)
Max Liquid Pressure – PSIG (BARG)	170 (11.7)
Control Air Min – PSIG (BARG)	50 (3.4)
Control Air Max – PSIG (BARG)	130 (9.0)
Ht – inches (cm)	13-1/2 (34.3)
Width – inches (cm)	10-3/4 (27.3)
Depth (Inlet/BV) – inches (cm)	14-0 (35.6)
Inlet / Outlet – NPT	2
Control Air – NPT	1/4
Balance Line – NPT	1/8
Max Capacity @ 110 PSI - GPM (kg/hr)	38.75 (8800) *
Weight – LBS (KG)	36.5 (16.6)

* Varies with pressure/piping



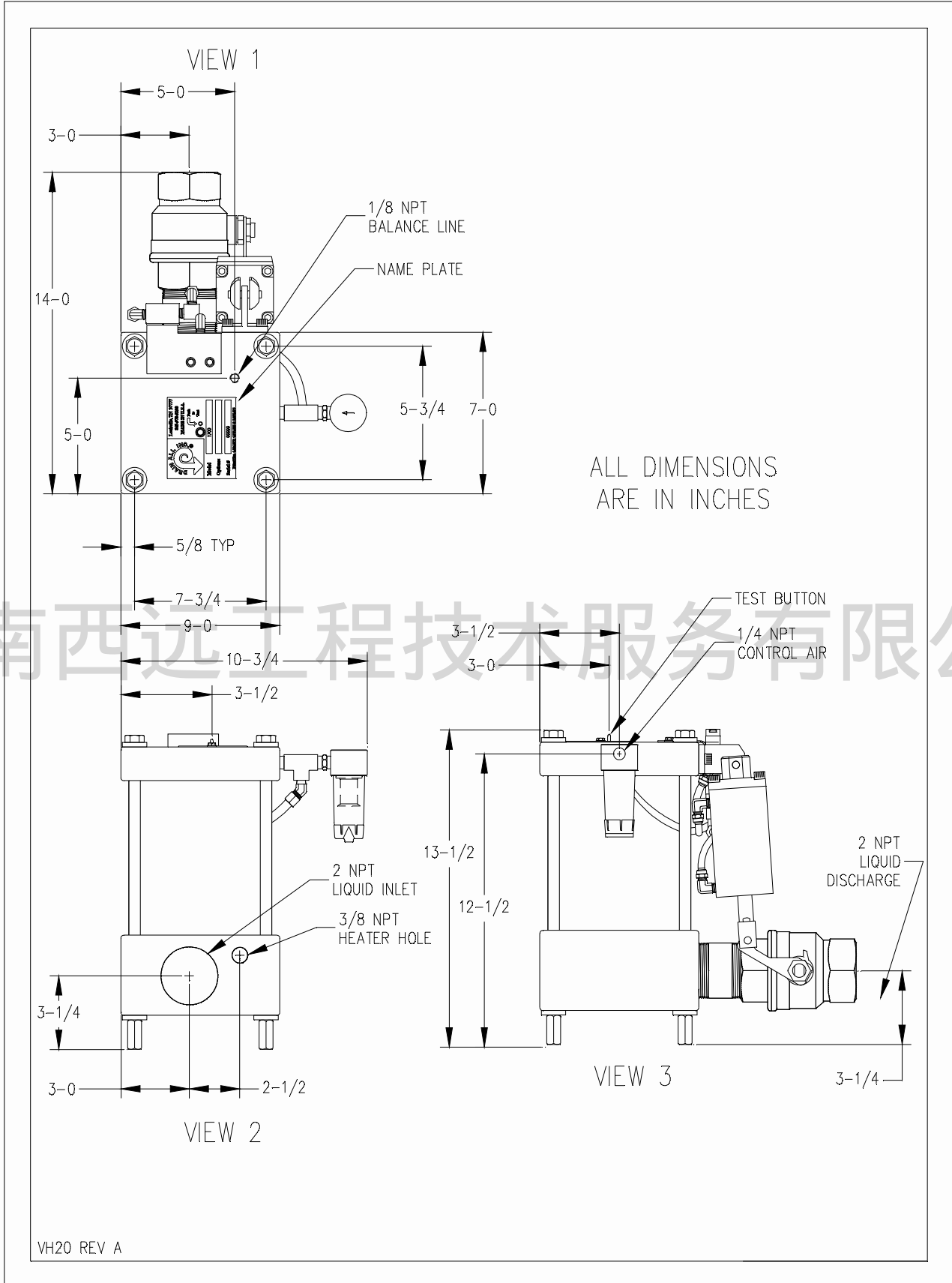
COMPONENT PARTS DRAWING



PARTS & MATERIALS OF CONSTRUCTION

CODE	PART #	ITEM	DESCRIPTION/REMARKS	Qty
1	300775	Valve Attachment Kit	Includes:	1
			(1) Bracket-Stainless Steel	
			(2) Screws-Zinc Plated Steel	
			(2) Screws,Self Tapping- Zinc Plated Steel	
			(2) Nuts-Zinc Plated Steel	
2	300740	4-Way Valve	Black Enamel Finished Aluminum	1
3	301215	Port Screen	Coated Steel Body, Bronze Screen	2
4	301000	Elbow Fitting	Brass	6
5	300128	Elbow Fitting	Brass	1
6	101000	Screen Assembly	Brass Tee, Aluminum Disk, (2) Stainless Steel Screens	1
7	350354	Control Air Tube, 1/4" Dia x 4" L	Nylon	1
8	350355	Control Air Tube, 1/4" Dia x 4.5" L	Nylon	1
9	350350	Control Air Tube, 1/4" Dia x 6" L	Nylon	1
10	350357	Control Air Tube, 1/4" Dia x 10" L	Nylon	1
11	302500	Screw, Self-Tapping, #10 x 5/8" L	Zinc Plated Steel	1
12	302806	Name Plate	Aluminum	1
13	300600	Push to Test Button	Brass	1
14	300700	Control Air Filter Assembly	Aluminum Head, Polycarbonate Bowl, Push Drain	1
15	300800	Hex Nipple	Brass	1
16	301127	Tee Fitting	Brass	1
17	170120	Head	Aluminum with (2) Cylinder Mount Holes	1
18	300315		Includes:	1
			(1) Cylinder 50-130 PSI, AL Body, Stainless Steel Rod	
			(1) Cylinder Mount Kit	
			(1) Mount Bracket-Steel, Black Oxide Finish	
			(1) Mount Pin-Steel, Black Oxide Finish	
			(2) Pin Clips-Steel, Black Oxide Finish	
			(2) Screws-Steel, Black Oxide Finish	
			(1) Clevis Kit	
			(1) Clevis-Steel, Black Oxide Finish	
			(1) Clevis Pin-Steel, Black Oxide Finish	
			(2) Pin Clips-Steel, Black Oxide Finish	
			(4) Washers-Zinc Plated Steel	
			(1) Set Screw-Steel, Black Oxide Finish	
19	301210	Elbow Fitting	Brass	1
20	302210	Valve Stem O-ring	Viton, Brown	1
21	100730	Valve Stem, 2.235" L	O-ring Seal, Aluminum	1
22	400100	Inner Magnet	Ceramic with Viton Ends and Covering	1
23	302215	Center Tube O-ring	Viton, Brown	1
24	200170	Center Tube, 4.5" L	O-ring Seal, Aluminum	1
25	302330	Hex Bolt	Zinc Plated Steel	4
26	100480	Float	Polyurethane, Bullet Shaped	1
27	302200	Sleeve O-ring	Viton, Brown	2
28	100300	Sleeve, .125" TK	Epoxy Fiberglass, Translucent	1
29	301500	Washer	Zinc Plated Steel	8
30	120801	Control Lever	Stainless Steel for 2" NPT Ball Valve	1
31	170220	Base	Aluminum	1
32	300914	Nipple	Stainless Steel	1
33	300212	Heavy Duty Ball Valve, 2" NPT	Double O-ring Viton Stem Seals, Nickel Plated Brass	1
34	302400	Coupling Nut	Zinc Plated Steel	4
35	301130		Includes:	1
36			(2) Needle Valve-Brass	
37			(1) Straight Fitting-Brass	
38			(1) Elbow Fitting-Brass	
39			(1) 1/4" Dia LDPE Tube	

DIMENSIONAL PRINT



湖南西远工程技术服务有限公司